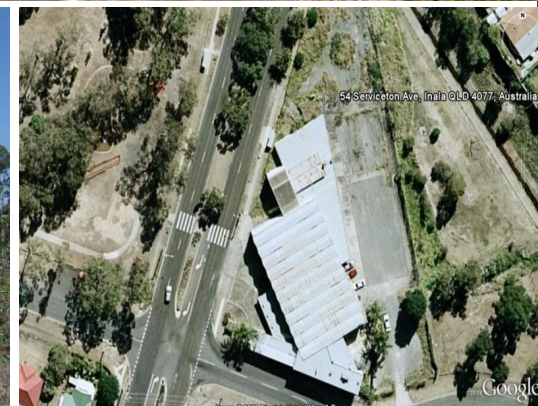




firstnational
COMMERCIAL



54 Serviceton Avenue, Inala QLD 4077

Prime Corner Development Site

- Formerly sports hall, gym and restaurant
- 1,850 m2 building area & 65 car spaces (approx.)
- Zoned Emerging Community
- Level site on 3 street frontage with excellent exposure
- Buses on door step opposite park
- 600 metres to vibrant Inala Shopping Town
- Potential commercial and/or residential developments
- The building is in need of extensive repair works

Retail
FOR SALE

1850sqm



firstnational
COMMERCIAL

Hiep Nguyen

0414 311 262

hiepn@metrofn.com.au