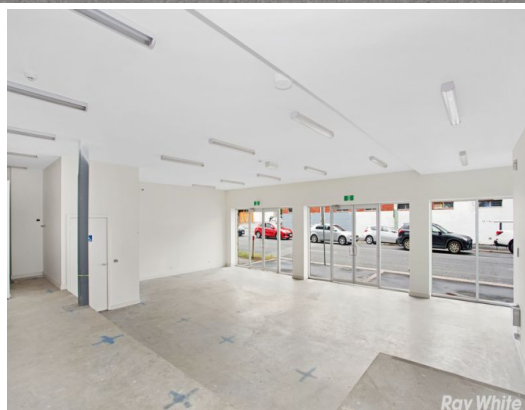




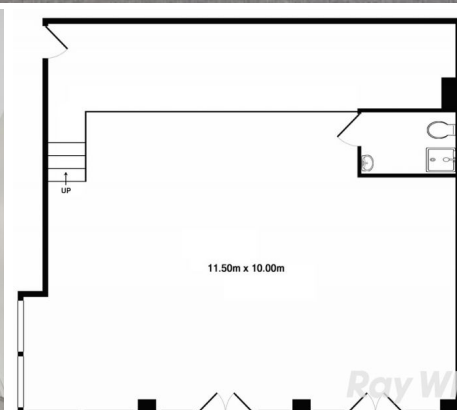
Ray White



Ray White



Ray White



Ray White

51 Murrumbeena Road, Murrumbeena VIC 3163

Retail/Office in Prime South-Eastern Location ? Occupy or Invest!

Ray White Commercial Oakleigh is delighted to offer for sale this magnificent ground-floor retail property located in one of south-east Melbourne's most desirable locations.

With over 10 meters of street frontage to the ever busy Murrumbeena Road, this is the perfect property for an owner-occupier or astute investor.

Located just minutes from Chadstone Shopping centre and providing terrific access to major arterial roads and public transport, don't miss out on this extremely rare opportunity.

Property Features Include:

- Total Building Area: 108m2 (approx.)
- Located in desirable

Retail
FOR SALE

108sqm

Ray White

Paul Rizzo

0418 688 888
paul.rizzo@raywhite.com

Joshua Colosimo

0413 790 309
joshua.colosimo@raywhite.com