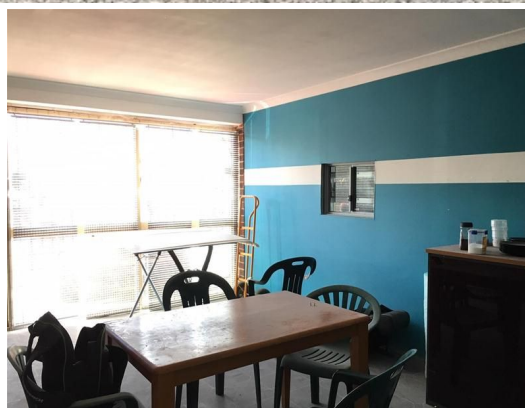




firstnational
COMMERCIAL | Giles Jones



1/18 Runyon Road, Midvale WA 6056

HANDY LOCATION

This premise is perfect for smaller industrial businesses or to be used simply for storage. The site has a great commercial location within Midvales Business Centre and is a stones throw from both Great Eastern & Roe Highways.

- 148 square meter warehouse
- 3-phase power
- Air conditioning
- Security alarm
- Kitchenette & toilet facilities
- Front roller door access.
- Onsite parking

This unit historically

Industrial
FOR LEASE

148sqm



firstnational
COMMERCIAL | Giles Jones

Cambell Giles

0418 936 544

cambell.giles@gilesjones.com.au

alex.taylor@gilesjones.com.au