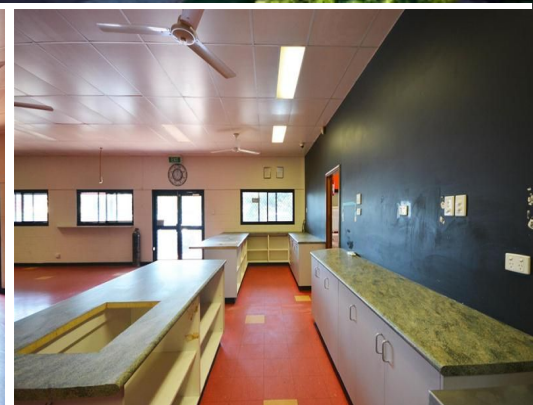
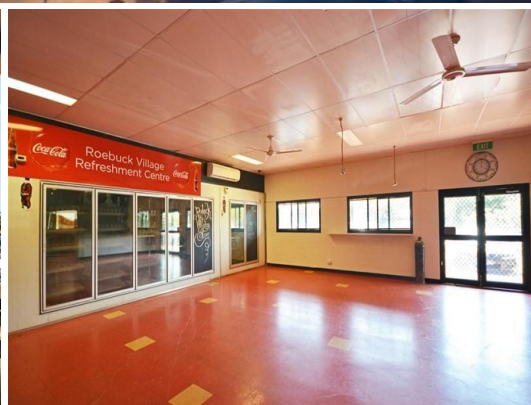




**firstnational**  
COMMERCIAL



**99 Sanderling Drive, Djugun WA 6725**

## Desirable Commercial Premises in the Heart of Roebuck Estate

This is a fantastic opportunity to purchase your very own freehold commercial premises on a prime position in the heart of popular Roebuck Estate.

The air-conditioned property consists of one large internal space approximately 16m x 16m with free standing counters, walk-in fridges, and a walk-in freezer. There is a commercial kitchen complete with 900mm gas cooker, which is kitted out with cassette air conditioning, a deep fryer, stainless steel benches, a deep freezer and more.

The property is on a generous 1,696 sqm site, with side access leading to a commercial roller door, so you can load goods in and out of the premises with ease. A separate laundry with washing machine, and newly painted ladies and gents toilets sits to the rear of the building. The property in

Retail  
FOR SALE

16sqm



**firstnational**  
COMMERCIAL

**Lee Anderson**

0417 463 830

[sales2@broomerealestate.com.au](mailto:sales2@broomerealestate.com.au)