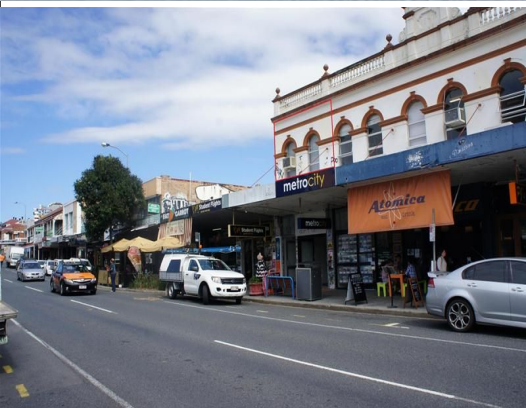




firstnational
COMMERCIAL



6/173 Boundary Street, West End QLD 4101

Heart of Boundary Street Office

- Busy Walk By Traffic
- Affordable Rental Rate
- Parking Available
- Transport At Door

Offices
FOR LEASE

50sqm



firstnational
COMMERCIAL

Anthony Conias

0408 266 427

anthony.conias@metrofn.com.au