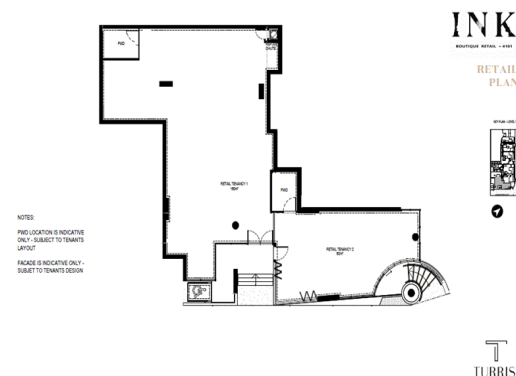
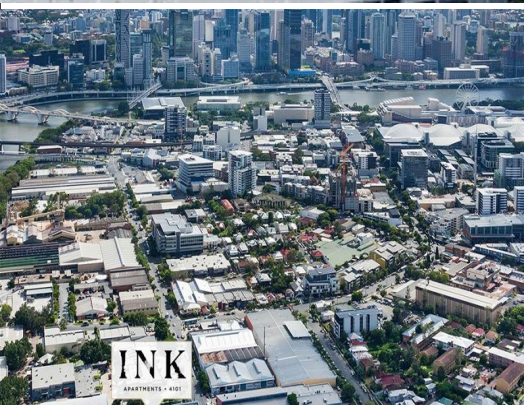




**firstnational**  
COMMERCIAL



**1/213 Montague Road, West End QLD 4101**

## "Unsurpassed Montague Road Exposure"

- Busy Montague Road with Transport at Door
- Walking distance to River
- Thriving Local Activity & Development

Retail  
FOR LEASE  
Contact Agent  
160sqm



**firstnational**  
COMMERCIAL

**Anthony Conias**

0408 266 427

[anthony.conias@metrofn.com.au](mailto:anthony.conias@metrofn.com.au)