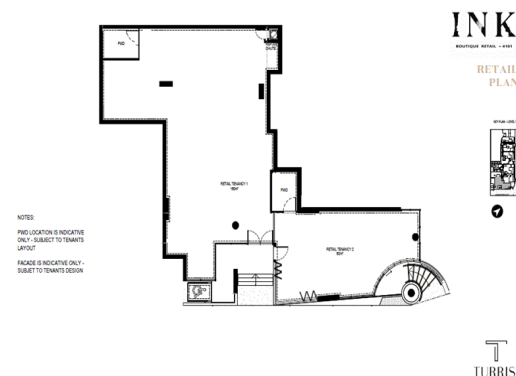
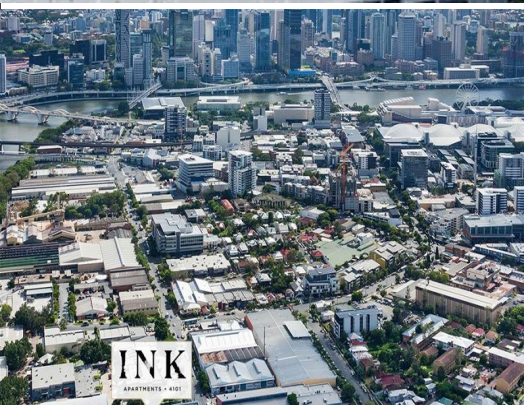




firstnational
COMMERCIAL



2/213 Montague Road, West End QLD 4101

"Unsurpassed Montague Road Exposure"

- 65m2 Prime Corner Location with Huge Exposure
- Busy Montague Road with Transport at Door.
- Walking distance to River.
- Thriving Local Activity & Development.

Retail
FOR LEASE
Contact Agent
65sqm

Call Anthony Conias on 0408266427 to discuss further details



firstnational
COMMERCIAL

Anthony Conias

0408 266 427

anthony.conias@metrofn.com.au