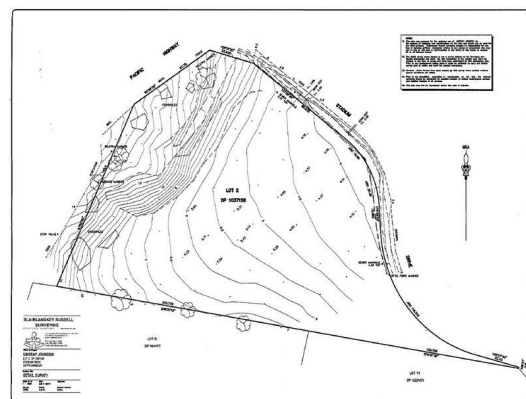
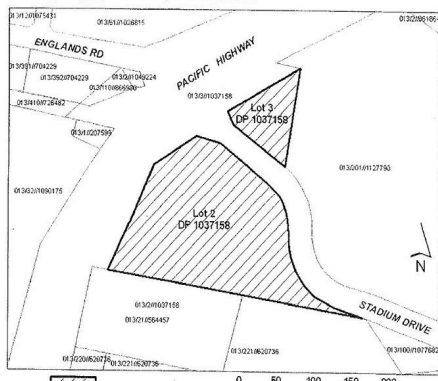




Lot 2 and 3, DP1037158, Stadium Drive, Coffs Harbour South



Lot 2 Stadium Drive, Coffs Harbour NSW 2450

Huge Highway Frontage

This prime 'Gateway' commercial site is located on the south eastern roundabout corner of the Pacific Highway and Stadium Drive, approximately 3 kilometres south of the burgeoning Coffs Harbour CBD.

The land is fully serviced and generally level at its street frontages and then rises up towards the south, offering huge exposure to the 50,000 plus vehicles a day travelling along the Pacific Highway between Sydney and Brisbane.

The property lies at the major southern roundabout intersection of the proposed Coffs Harbour bypass, which will travel west along what is now Englands Road.

The site has an approximate total site area of 3.479 HA (8.6 acres), with frontage to the Pacific Highway of 241.

Development

FOR SALE

\$6,000,000 GST Exempt