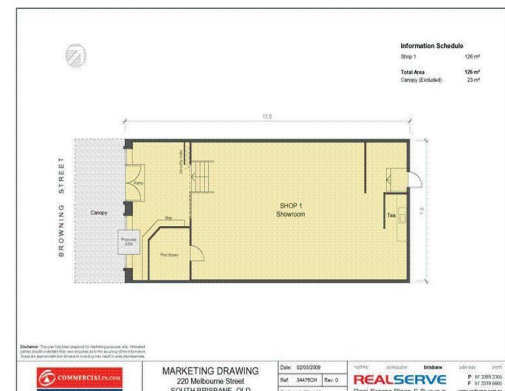
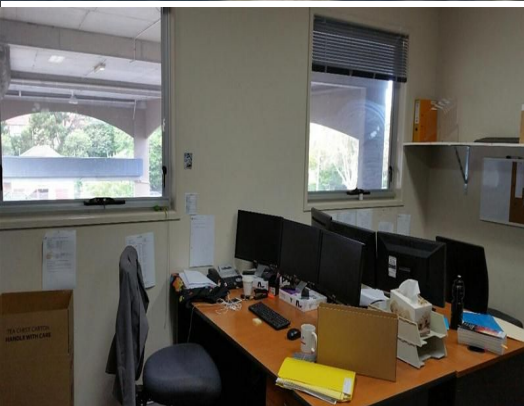




firstnational
COMMERCIAL



G/1454 Logan Road, Mount Gravatt QLD 4122

GROUND LEVEL OFFICE

- 225m²
- Huge signage on to busy Logan Road.
- 4 dedicated car parks and 3 visitor car parks.
- Air-conditioned.
- Kitchenette.

This ground level space would suit professional offices or medical use. Currently consists of several large rooms and meeting rooms with kitchenette, administration and waiting room. The tenancy provides 4 dedicated car spaces, 3 visitor car parks and more street parking.

Offices
FOR LEASE
Contact Agent
215sqm



firstnational
COMMERCIAL

Jordan Brown

0407 039 553

jordan.brown@metrofn.com.au