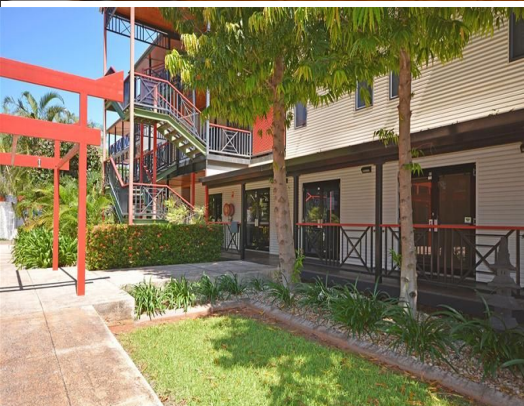




firstnational
COMMERCIAL



23/39 Carnarvon Street, Broome WA 6725

Office Space in Shiba Lane

Prime office space located on the ground floor in Shiba Lane located in Broome's CBD and is available now.

The property features:

- 45sqm ground floor office
- \$350 m2 per annum
- Open plan with a single glass partitioned office
- Convenient and quiet location
- Internal kitchenette and bathroom
- Outgoings \$9190 + GST per annum

This office is definitely worth a look

Contact our commercial

Offices

FOR LEASE

\$15750 + GST per annum

45sqm



firstnational
COMMERCIAL

Amanda Raffan

0419 008 440

commercialman1@broomerealestate.com.au

Allan Griffiths

0419 922 000

griff@broomerealestate.com.au