



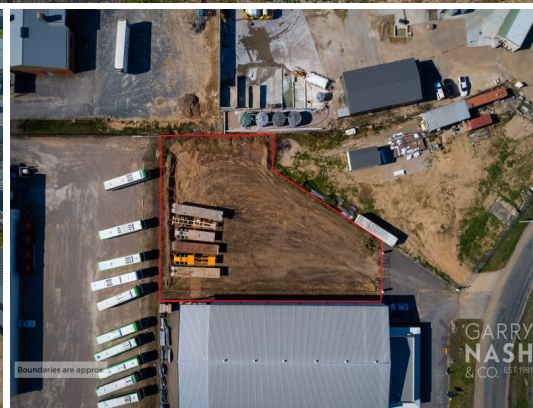
Boundaries are approx.

GARRY NASH & CO. EST. 1981



Boundaries are approx.

GARRY NASH & CO. EST. 1981



Boundaries are approx.

GARRY NASH & CO. EST. 1981



GARRY NASH & CO. EST. 1981

2/37-39 Gibson Street, Wangaratta VIC 3677

LAND IN GIBSON ST

- * High profile 2,114m2 vacant industrial allotment
- * Securely fenced on 3 boundaries
- * Located amongst many long established businesses
- * Industrial 1 zoning with no overlays

Development
FOR SALE



Sales Team

sales@garrynash.com.au