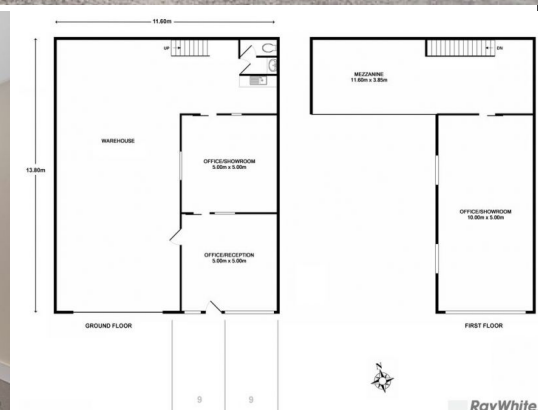




RayWhite
COMMERCIAL



35 Garden Road, Clayton VIC 3168

CLEAN MODERN OFFICE/WAREHOUSE

- Total lettable area 210m2 approx.
- Includes modern office area of 100m2 approx over two levels with heating/cooling
- Plus a further 40m2 approx of load bearing mezzanine area
- Container height motorized roller door
- Amenities include toilet, kitchenette
- Onsite parking for 3 vehicles
- Must inspect to appreciate

\$25,000 p/a + GST + Outgoings

Paul Rizzo - 0418 688 888
Joshua Colosimo - 0413 790 309

Industrial
FOR LEASE

210sqm

Ray White

Paul Rizzo
0418 688 888
paul.rizzo@raywhite.com

Joshua Colosimo
0413 790 309
joshua.colosimo@raywhite.com