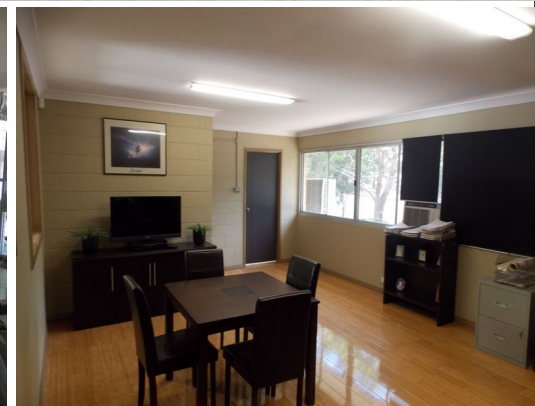




LJ Hooker Commercial Parramatta



Unit 16/11 Romford Road, Kings Park NSW 2148

Industrial Unit- 164sqm IN1 Zoning

This functional unit is in close proximity to the M7 Motorway and benefits from frontage to Vardys Road.

Features include:

- Fully refurbished air-conditioned office space
- Separate air-conditioned workshop
- Male/female amenities
- 3 phase power
- 2 car spaces
- IN 1 General Industrial zoning

Industrial
FOR SALE

164sqm



Steven Giffney

0418 511 462

sgiffney@solvecommercial.com.au