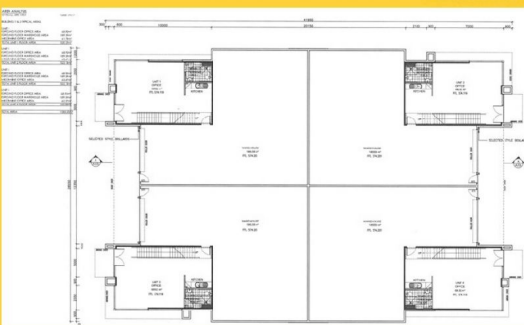




Raine & Horne[®]
Commercial



14 /15-21 Beaconsfield Street, Fyshwick ACT 2609

New Warehouse Facility

This quality new development comprises of five modern stand alone buildings each housing 4 warehouse units of varying sizes. The tenancy of 335m² has excellent amenities, roller door access, high clearance warehouse and showroom/office area.

The unit has approx. 265m² ground floor warehouse/ office space and approx. 70m² of First Floor office space.

Industrial
FOR LEASE
Price Upon Application
335sqm

PROPERTY 
The place for workspace.

Michael Lo Pilato

0418 688 787

mlopilato@rhccanberra.com.au