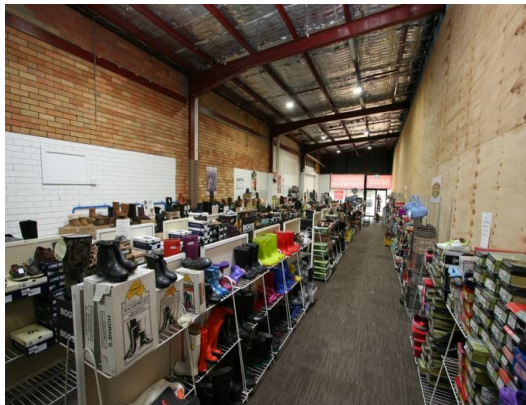




Outline Indicative Only



**1/27-29 Lambton Road, Broadmeadow NSW 2292**

## City Fringe Shopfront

- Approx 190m?<sup>2</sup>\*
- Clear span space
- Zoned B4 Mixed Use
- Centrally located on main arterial road
- A versatile space suitable for a range of potential uses
- Large signage opportunity
- LED lighting throughout
- Kitchenette & internal amenities

For Lease: \$35,000 pa Gross + GST

\*Approximately

Retail  
FOR LEASE

190sqm

**Ray White.**

**Lee Follington**

0417443478

lee.follington@raywhite.com