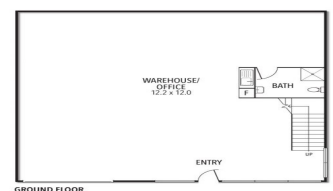
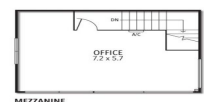


48/31-39 NORCAL ROAD, NUNAWADING



48/31-39 Norcal Road, Nunawading VIC 3131

Immaculate Brand New Warehouse

Be the first tenant in this brand new warehouse as part of the exciting 'Industrial' development just completed. Occupying a prime corner position, this property offers a brilliant mix of high span warehouse area (approx. 147m²) and a spacious, light-filled mezzanine office area (approx. 41m²). Useful features include NBN connection, 3 phase power, electric container height roller door, kitchenette and shower/bathroom area and an air-conditioned office.

Centrally situated within easy access to major Eastern Suburbs arterials, this property will give your business a professional, well presented base from which to expand.

- Flexible leasing terms
- 3 onsite car-spaces
- Zoning | Commercial

Industrial
FOR LEASE

147sqm

Ray White®

Cameron Barber

0431 176 786

cameron.barber@raywhite.com