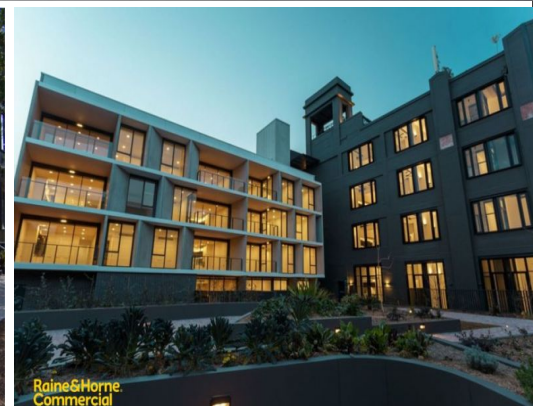


**RENT REDUCED**

**Raine&Horne**  
Commercial



## 6-8 Crewe Place, Rosebery NSW 2018

### Corner Food Opportunity with huge Residential catchment

Situated on the corner of Crewe Place and Rosebery Avenue in Rosebery lies The Burcham, a heritage building re-imagined into a modern and sustainable apartment complex development.

On offer is the ground floor retail space ready to be utilised by as a restaurant/brewery or wine bar.

This property will not last long don't miss your opportunity to be part of this rapidly growth precinct in South Sydney.

Key selling points:

- Building area 177sqm (approx.)
- External outdoor seat

Retail

FOR LEASE

Make an Offer - Rent Reduced

177sqm

**Raine&Horne**  
Commercial

**Michael Buium**

0408 385 385

Michael.buium@rhc.com.au