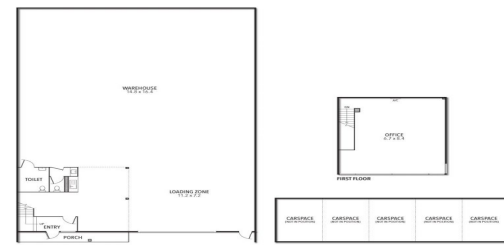




11/53 GATEWAY BOULEVARD, EPPING



11/53 Gateway Boulevard, Epping VIC 3076

Be Part Of The Boulevard

This property presents the perfect opportunity to establish or relocate your business in one of Melbourne's booming commercial corridors in a high clearance, professional space that positions itself within close proximity to both the Hume Highway and Metropolitan Ring Road.

- Building area | 420m2 approximately
- Office & toilet amenities
- Zoning | Industrial 1
- Ample car parking

Industrial
FOR LEASE

420sqm

Ray White®

Kristian Etherington

0400 409 833

kristian.etherington@raywhite.com