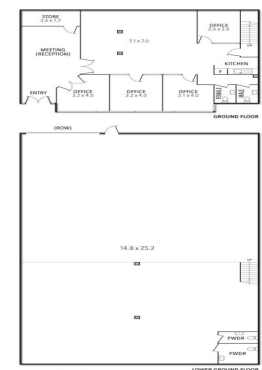




17/56 NORCAL ROAD, NUNAWADING



17/56 Norcal Road, Nunawading VIC 3131

## Rent Free Incentives Available

This clean, well presented property presents the ideal chance to occupy a larger industrial offering in the increasingly tightly held Nunawading industrial market. The property offers a flexible open plan layout and a boardroom, kitchen and toilet amenities, and high clearance warehouse space. With bus and train access within proximity, ample street parking and easy access to all major arterial roads, the property is an ideal fit for a range of occupants and simply will not last long.

- Building area | 532m<sup>2</sup> approximately
- Partitioned offices
- 8 onsite car parks
- Zoning | Industrial 1

Industrial  
FOR LEASE

532sqm

# Ray White®

**Kristian Etherington**

0400 409 833

kristian.etherington@raywhite.com