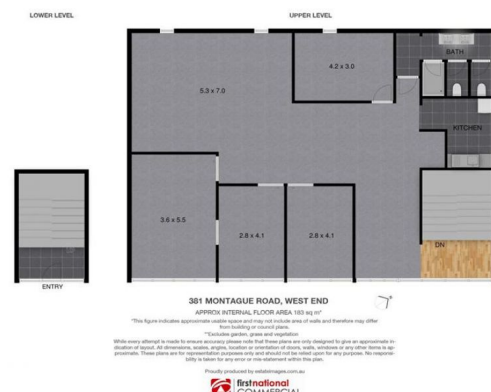




**firstnational**  
COMMERCIAL



**2/381 Montague Road, West End QLD 4101**

## Newly Renovated Mezzanine Office

- Approx 185 m2 freestanding mezzanine office / showroom / retail space.
- Refurbishment complete incl toilets, shower, kitchenette, painting, carpet, Air-Conditioning
- Prime Montague Road frontage
- Soon to have high-end retail, residential and Woolworths nearby
- High speed internet to the area (Telstra Velocity)
- Within minutes of key Brisbane landmarks
- Established high-end residential communities nearby and developments underway
- MU3 Mixed Use (Corridor) zoning which allows for a multitude of uses
- Dedicated onsite parking - 3 bays (2 at front to Montague Rd and 1 at rear to Tondara Lane)

Offices  
FOR LEASE  
Contact Agent  
183sqm



**George Koukides**

0412 872 786  
georgek@metrofn.com.au