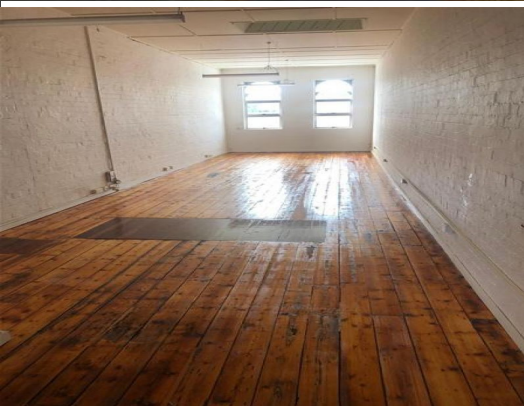




firstnational
COMMERCIAL



7/173 Boundary Street, West End QLD 4101

"Heart of Boundary Street Office"

- Busy Walk-by Traffic.
- Affordable Rental Rate.
- Parking Available.
- Transport at Door.

Situated right in the heart of Boundary Street West End is this upstairs tenancy of 62m2 approx. Right on top of popular block with cafes / restaurants etc and offices. Not available often so will not last long. Unique opportunity to position yourself right in the middle of west End. Car park also available.

Offices
FOR LEASE

62sqm



firstnational
COMMERCIAL

Anthony Conias

0408 266 427

anthony.conias@metrofn.com.au