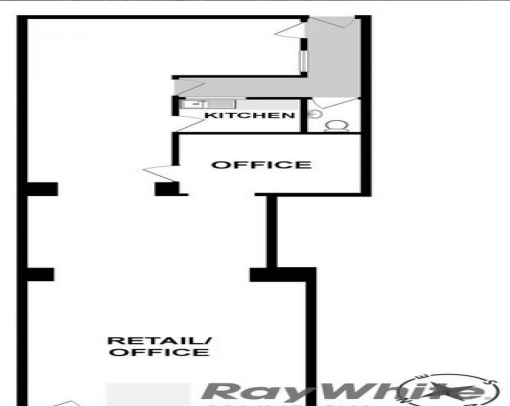




RayWhite
COMMERCIAL



26 Station Street, Oakleigh VIC 3166

BOUTIQUE OFFICE / RETAIL IN THE HEART OF OAKLEIGH

Located in the heart of Oakleigh, this as new office/retail space is perfect for a starting or growing business.

Close to all local shopping amenities and public transport with Oakleigh train station at your doorstep.

- Total building area 85m2 approx
- Large shop front
- Ample natural light
- Amenities include kitchenette
- Heating/cooling
- Commercial 1 Zoning(C1Z)

\$26,000 p/a plus GST +

Offices
FOR LEASE

85sqm

Ray White

Paul Rizzo

0418 688 888

paul.rizzo@raywhite.com