



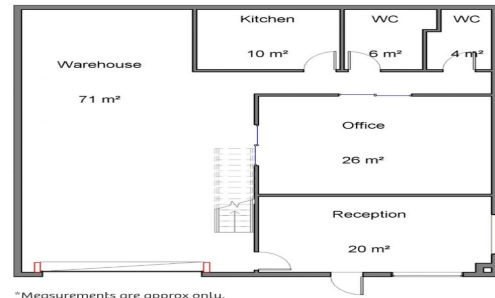
**Raine&Horne.
Commercial**

Local Knowledge & National Strength



**Raine&Horne.
Commercial**

3/27 Arizona Road, Charmhaven



3/27-31 Arizona Road, Charmhaven NSW 2263

&LEASED by Steven Thomas 0402 706 318

220m2 in total.

140m2 on the ground floor with extensive mezzanine, office and storage areas.

kitchen, disabled toilet with shower and single WC.

4.5m roller-door approx

3 dedicated car parks

good visibility to road

6m internal height (approx)

Available 16/4/19

For more information or

Industrial

FOR LEASE

220sqm

**Raine&Horne.
Commercial**

Steven Thomas

0402 706 318

steven@rhcoastal.com