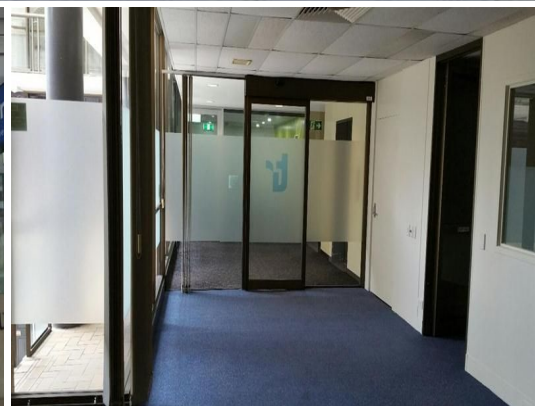




firstnational
COMMERCIAL



13/25 Mary Street, Brisbane City QLD 4000

Great Value Office

- 184m²
- Partial fit out in place
- 2 car parks

This 184m² is conveniently located on level 1 with easy access via lift or stairs. The location is central and extremely convenient. It is walking distance to all forms of public transport, QUT University and Brisbane's financial district.

Offices
FOR LEASE
Contact Agent
184sqm



Jordan Brown

0407 039 553

jordan.brown@metrofn.com.au