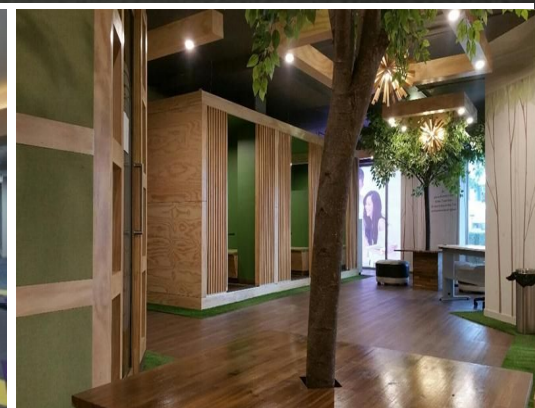
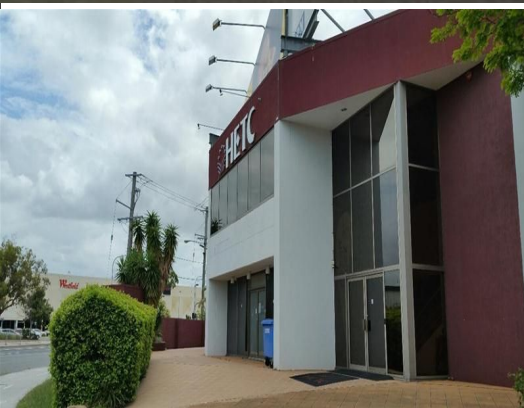




**firstnational**  
COMMERCIAL



**1993 Logan Road, Upper Mount Gravatt QLD 4122**

## UNRIVALED CORNER POSITON

- Ground level with potential to split
- Stylish high quality fit out with break out rooms and bar
- Exclusive secured car parking

First National Commercial is pleased to present 1993 Logan Road, Upper Mount Gravatt. This is a prime positioned space with huge signage exposure on to Logan Road & Kessles Road.

Offices

FOR LEASE



**firstnational**  
COMMERCIAL

**Jordan Brown**

0407 039 553

[jordan.brown@metrofn.com.au](mailto:jordan.brown@metrofn.com.au)