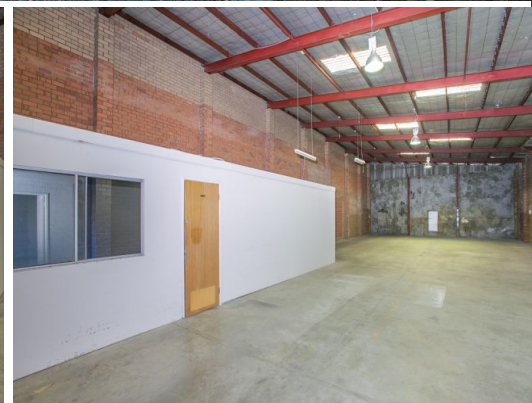


Only \$75 per sqm



3 / 3 Collingwood Street, Osborne Park WA 6017

SIMPLE & FUNCTIONAL WAREHOUSE

- 317 sqm
- Parking for approx 5 car bays
- Signage available
- M & F ablutions
- Kitchenette

Location

The property is in a prime location with great access to King Edward Road, Mitchell Freeway & Scarborough Beach Road

Asking Rental: \$24,000 pa + Outgoings + GST

Industrial

FOR LEASE

\$24,000 pa + Outgoings + GST

317sqm

Matthew Edwards

0402 515 251

matthew.edwards@rhc.com.au