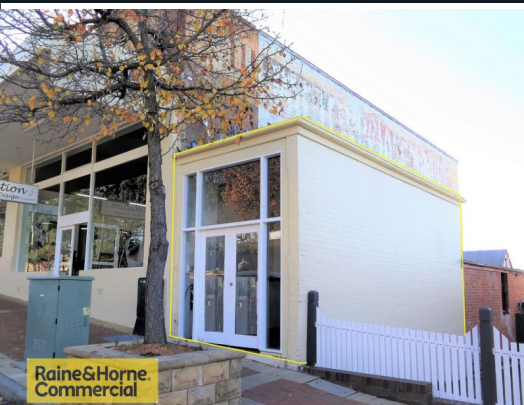




**Raine&Horne.**  
Commercial

**Local Knowledge & National Strength**



**1/14-16 Alison Rd, Wyong NSW 2259**

## **&LEASED by Ben Purdue 0450 719 600**

Situated in the heart of Wyong is this small shop available now at the Chapman Building.

This property is a landmark site for locals & has received a fantastic makeover ensuring your business benefits from this quality restoration. With regular foot traffic via the Pacific Hwy & Wyong Train Station, you will certainly love this location!

Adjacent to the popular Gallery Precinct, the building also has Glee Coffee Roasters on the same site.

Retail  
FOR LEASE

23sqm

**Raine&Horne.**  
Commercial

**Ben Purdue**

0450 719 600

ben@rhccc.com.au