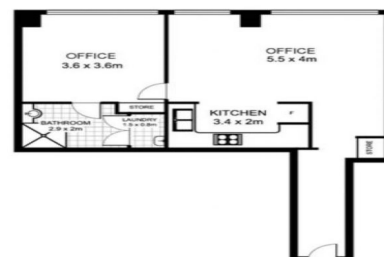




Suite 38, Level 12,
60 Park Street,
SYDNEY



60 Park Street, Sydney NSW 2000

12/60 Park Street, Sydney

60 Park Street is a strata-titled office building located at the North-Western intersection of Elizabeth Street opposite Hyde Park.

- Top floor suite with East facing Hyde Park and Harbour views
- Open plan area, partitioned main office and direct lift exposure
- Own amenities including walk in kitchen and full bathroom
- Close walking distance to Town Hall, St. James & Museum stations

Offices
FOR LEASE

61sqm

Ray White

John Skufiris

0414969221

j.skufiris@rwcss.com