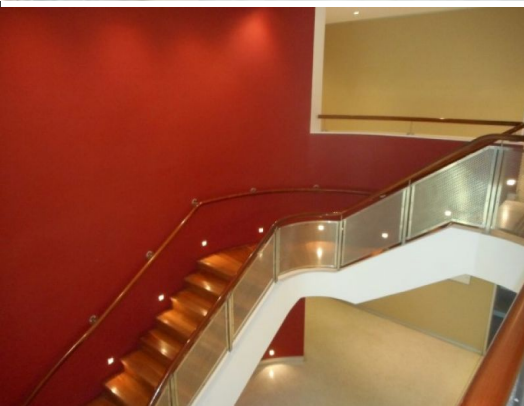


**SHORE**



**Suite 5/13a Narabang Way, Belrose NSW 2085**

## **OUTSTANDING OFFICE SPACE**

Bungarra Business Centre is located within the Austlink Business Park on Narabang Way, Belrose easily accessible near the junction of Forest Way & Mona Vale Road a short walk to bus transport and the Belrose Supermarket.

This three level building is Austlinks Premier office building. The lower level offers production suites or storage warehousing. There is an onsite cafe and parking for 80 cars, secure parking at \$100 + GST per month. On grade parking no cost - 2 secure parking - 4 on grade.

Offices  
FOR LEASE  
Contact Agent  
166sqm

**SHORE**

**Leigh Hyland**

leigh@shorecp.com.au