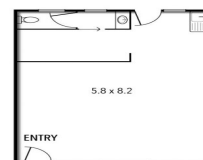


4/90-94 MELBOURNE HILL ROAD, WARRANTYTE



4/90-94 Melbourne Hill Road, Warrandyte VIC 3113

## Must Be Leased - Make an Offer

A flexible open plan office or retail space in a central location in Warrandyte. With ample onsite parking, this site is easily accessible for staff or clientele alike. Suitable for a variety of uses (STCA). Basic office amenities including WC, kitchenette and rear access add to the versatility of this property.

- Building area | 48m<sup>2</sup> approximately
- Flexible lease terms
- Zoning | Commercial 1

Retail  
FOR LEASE

48sqm

# Ray White®

**Cameron Barber**  
0431 176 786  
cameron.barber@raywhite.com

**Kristian Etherington**  
0400 409 833  
kristian.etherington@raywhite.com