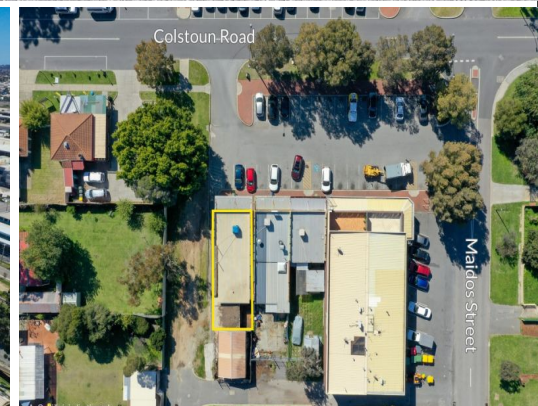




Outline is indicative only



1 Colstoun Road, Ashfield WA 6054

Character Retail Strip Shop in Busy Neighbourhood Location

Located in a well maintained strip shop development with long term occupants including an IGA and chemist. Totalling 94sqm* under roof the property is strategically positioned opposite from the Ashfield Train Station and active Sporting fields with high level pedestrian traffic.

Property features:

- Flexible footprint with 39sqm* - 61sqm* of shopfront and 33.5sqm* Rear office, shower, WC and kitchen area
- Evaporative air-conditioning
- Gas available to shop front
- Rear secure parking for 2 vehicles

Rent: \$39,000 Per Annum

Retail
FOR LEASE

93sqm

Ray White.

Tom Jones

0478 771 117

tom.jones@raywhite.com