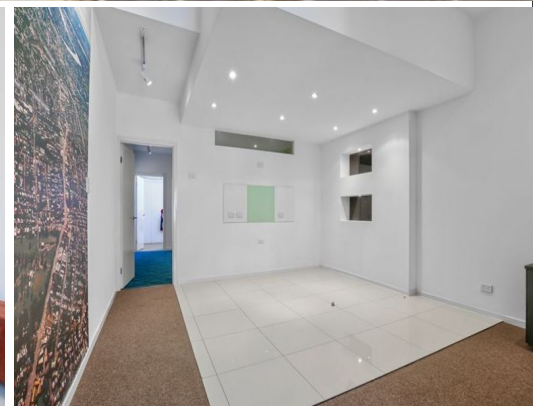
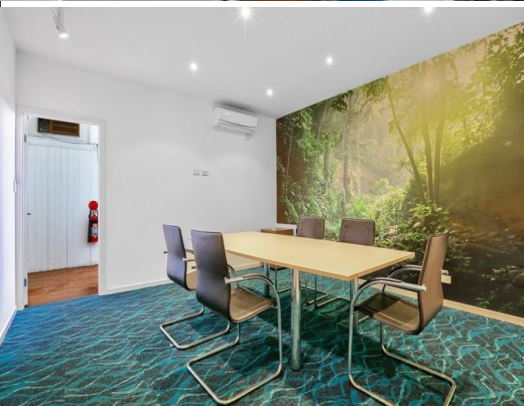




outline is indicative only



**488 Ipswich Road, Annerley QLD 4103**

## **Retail / Office - Major Exposure plus Ample Parking**

- \* Opportunity to lease approx. 100sqm of 2 office / retail spaces
- \* High level exposure and signage opportunity
- \* Glass frontage
- \* Rear parking plus ample off street
- \* Rear access plus on-site amenities
- \* Semi-partitioned accommodation
- \* Located next door to commonwealth bank
- \* Within the business and retail district of Annerley

Offices

FOR LEASE

\$35,000 p/a

Competitive market rental and available now.

Outgoings: Paid by Tenant

Please contact Exclusiv

**Raine&Horne.**  
Commercial

**Paul Flego**

0406 604 767

paul@rncommercial.com.au