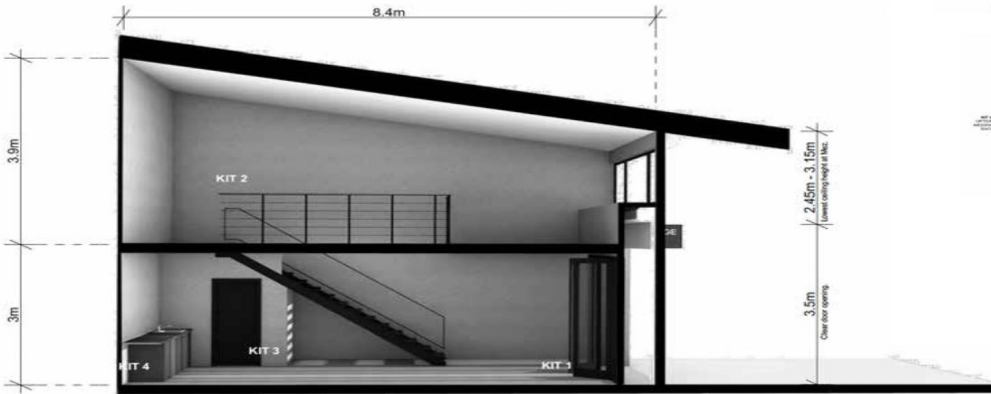


[ 34M<sup>2</sup> UNIT ]

**34m<sup>2</sup> Unit**  
 4.1m x 8.4m  
 3 potential mezzanine options.  
 4 kit of parts:  
 KIT 1: OPTIONAL SHOPFRONT  
 KIT 2: OPTIONAL MEZZANINE  
 KIT 3: OPTIONAL WC  
 KIT 4: OPTIONAL KITCHENETTE



**203/900 Pacific Highway, Lisarow NSW 2250**

**Lisarow Heights Business Park, Enterprise Centre**

Located at 900 Pacific Highway, Lisarow, this new complex presents an outstanding opportunity to secure a new commercial unit within the tightly held Lisarow business district.

34m<sup>2</sup> (4.1m x 8.4m) units offer:  
 - 3 potential mezzanine options  
 - 4 kit of parts being:

- Kit 1: Optional Shopfront
- Kit 2: Optional Mezzanine
- Kit 3: Optional WC
- Kit 4: Optional Kitchenette

Industrial  
 FOR SALE  
 \$127,500 + GST  
 34sqm



**Brad Rogers**  
 0459 921 122  
 brad@rhccc.com.au

There is an opportunity to select from 74 brand-new units ranging from 34m<sup>2</sup> to 100m<sup>2</sup> in size. The units are priced at an e