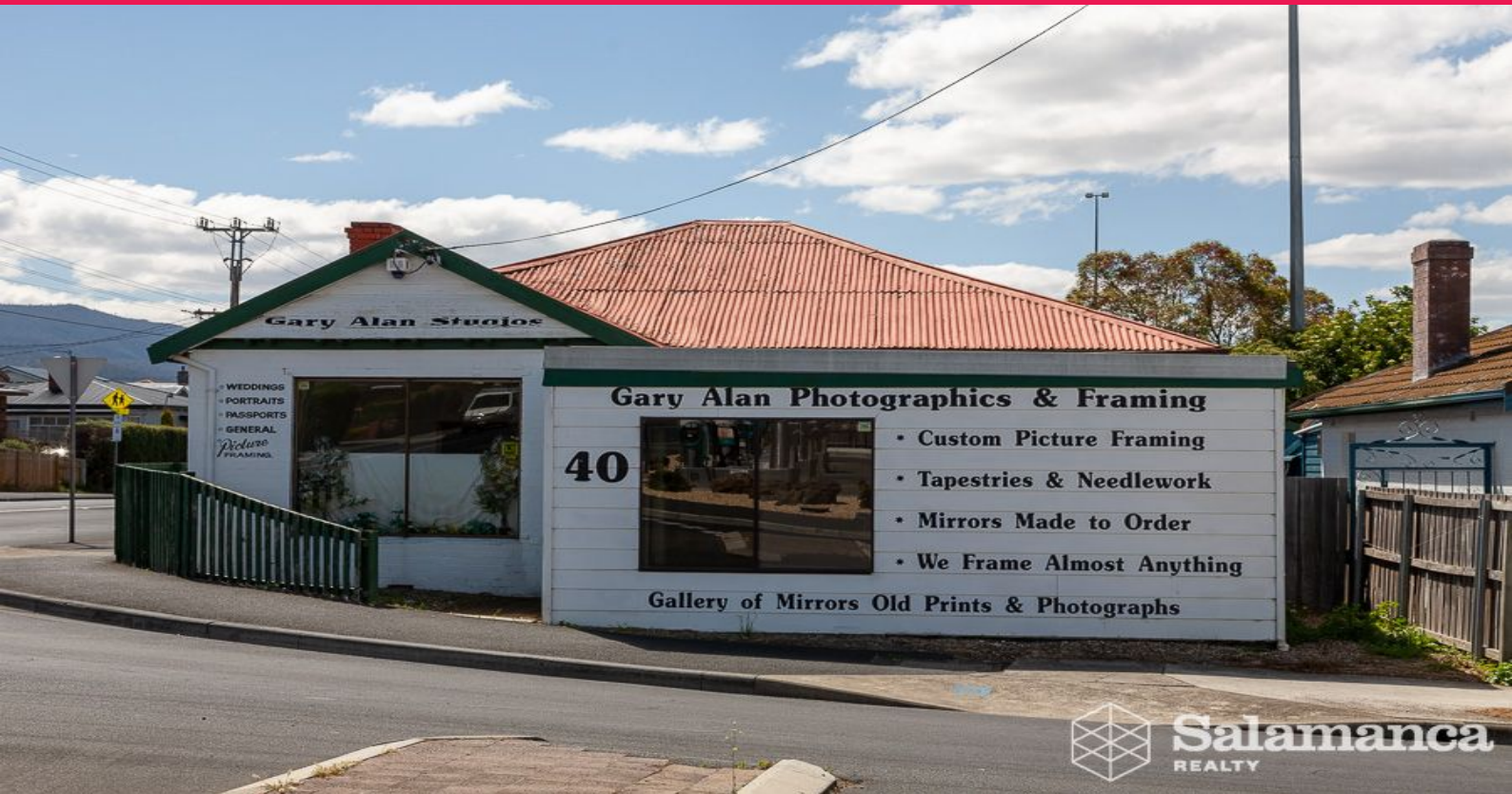




Salamanca
REALTY



40 Hopkins Street, Moonah TAS 7009

Retail, Service, Office

Here is great exposure for your business.

Located on the corner of Hopkins & Charles St in Moonah, it adjoins the Moonah Central car park.

This is the first time the property has been offered to the market place in over 40 years.

The building is some 185m² in area & comprises several showroom areas and offices together with storage, work areas and conveniences.

There is parking for 2-3 cars in the secure rear yard area.

Retail
FOR LEASE

185sqm



Salamanca
REALTY

Mark Lawler

0418 126 138

m.lawler@salamancare.com.au

Alan Clark

0419 788 237

a.clark@salamancare.com.au