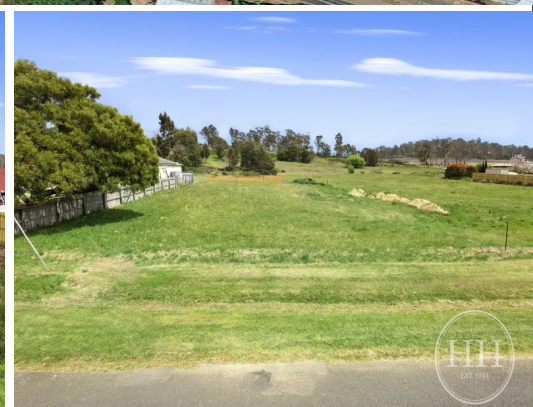
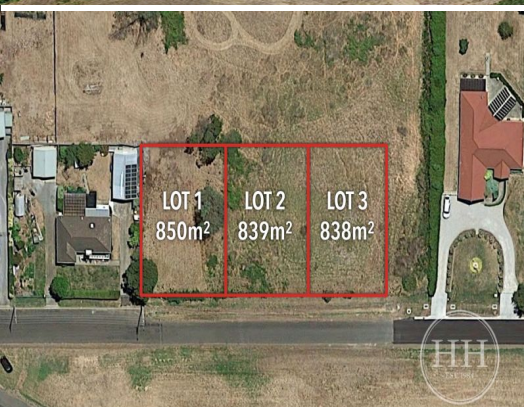


LAUNCESTON CBD, 15 MINUTES

PERTH TOWN CENTRE, 2 MINUTES



Lots 1-3 Cromwell Street, Perth TAS 7300

3 near level building blocks

Have you been searching for a building block but you want to remain close to services?

This 3 lot subdivision, with varying block sizes from 836m² to 850m² of near level land, with all services available roadside to the block.

It could be the perfect location for the dream build, in a town that is continuing to grow in popularity.

Or perhaps you are looking for a chance you could even look to do a development on the block (STCA).

With titles expected to be issued in coming months, buy now and secure your piece of the Northern Midlands.

The information on this website has in part been supplied to Harrison Agents Pty. Ltd. by third parties and all information is published solely for potential purchasers to assist them in deciding whether

Land

FOR SALE

Contact Agent

Jesse Denholm

0407 087 356

jesse.denholm@harrisonagents.com.au