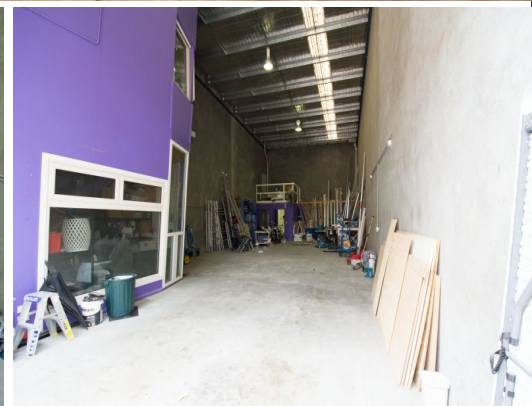
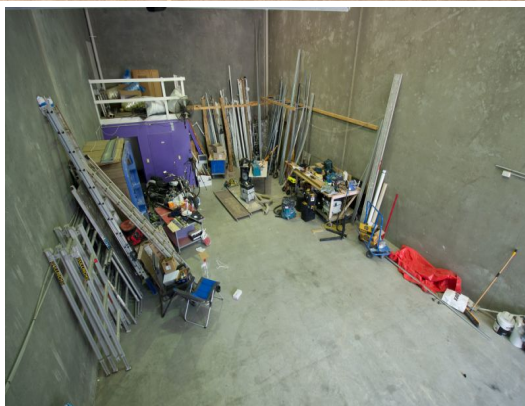


**UNDER
CONTRACT****4/9a Ponderosa Parade, Warriewood NSW 2102**

WELL APPOINTED - INDUSTRIAL UNIT/WAREHOUSE/SHOWROOM

With the ability to offer a myriad of uses this functional Industrial Warehouse is superbly located in the epicentre of Warriewood's Industrial Precinct.

Highly sought after, this Warehouse is perfect for manufacturing, auto trade, showroom or storage and has many other uses.

This boutique complex has easy Truck Access throughout, and easy access from major arterial roads, Mona Vale and Pittwater Roads, Creating the perfect location to run a business.

Features Include:

- High Clearance roof
- High Clearance auto roller door
- 3 Phase Power
- 2 level office space in

Industrial
FOR LEASE

155sqm

Hardy's 1**Lincoln Gutherson**

0406 776 788

lincoln@thenorthagency.com.au

John Vaccaro

0419 221 002

johnv@hardysrealty.com.au