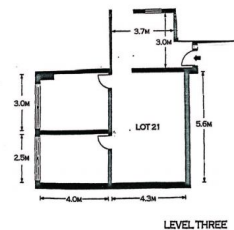




Suite 21/22 Darley Road, Manly



GROUND LEVEL

## Suite 21/22 Darley Road, Manly NSW 2095

### MODERN OFFICE SUITE IN STUNNING MANLY LOCATION

- | Exclusive floor area 46m2 (approx.)
- | Large open plan area plus 2 private offices
- | Plus shared reception area
- | Carparking available at an additional cost
- | What an impressive location to set up YOUR business!!!
- | Lots of natural light from floor to ceiling windows
- | Located on level 3 at back of building with views over Eastern Hill
- | Well maintained strata building in prime location
- | Ducted air-conditioning throughout
- | Lift access
- | Approval from Strata to install own kitchenette
- | Common bathroom facilities
- | Newly carpeted and freshly painted
- | Available as furnished

Offices  
FOR LEASE

56sqm

**Pravin, James & Mark James Lamplough**

0415 841 505

0477 772 435

novak@mail.inspectrealestate.com.au novak@mail.inspectrealestate.com.au