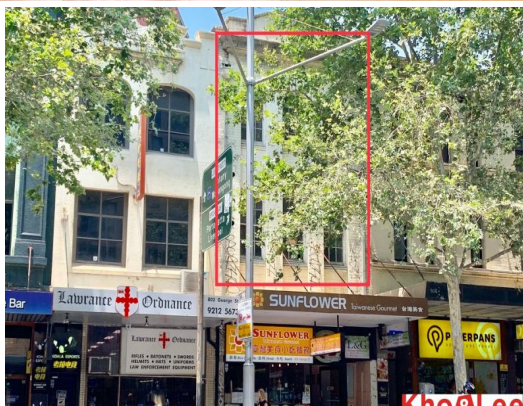




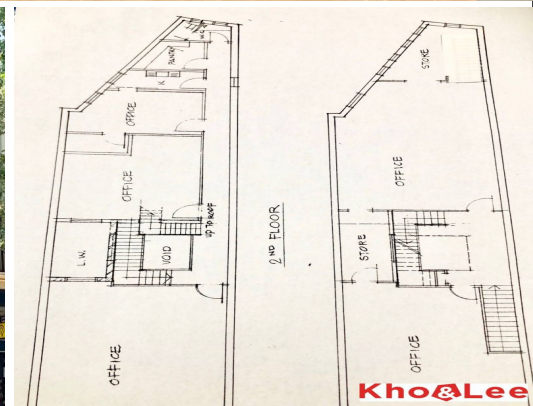
Kho&Lee



Kho&Lee



Kho&Lee



Kho&Lee

Level 1/804 George Street, Haymarket NSW 2000

Contact Me Now! Must be leased!!!

Rare offering! Huge opportunity exists to occupy this great double level premise in busy George Street, Haymarket. Approx 250 sqm versatile space with flexible layout in the heart of Chinatown provides the functionality and flexibility for a variety of uses including - Medical Centre, Education Centre, Restaurant, Retail, Showroom and Massage.

Featuring:

- * Location, Location, Location - CBD Sydney
- * In the heart of Australia's most densely populated suburb*
- * Massive space with approx 250sqm
- * Variety of uses spanning 2 floors
- * 1 min walking to Haymarket Light Rail Station
- * 3 mins walking to Central Station
- * Long Lease, Negotiable

Offices
FOR LEASE

250sqm

Kho&Lee

Patricia Kho

0402 246 905

patricia.kho@khoandlee.com.au

Tom Lee

0448 888 898

tom.lee@khoandlee.com.au