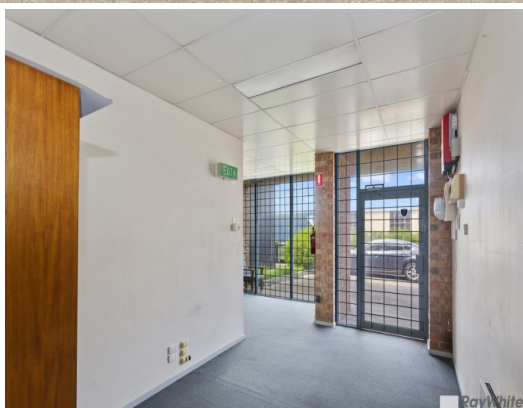




RayWhite
COMMERCIAL



12 Bricker Street, Moorabbin VIC 3189

OFFICE / WAREHOUSE WITH DIRECT STREET ACCESS - PRICE REDUCED!

Located just off Warrigal Road in the heart of the Moorabbin industrial precinct. Direct street access & four (4) onsite parking spaces on the front, providing excellent access for containers.

Property features:

- Total lettable area 230m²*
- Comprising reception / showroom & offices over two levels.
- Warehouse with great internal height (Max height 6m*) and container height roller door.
- Mezzanine storage area.
- Street frontage with

Industrial
FOR LEASE

230sqm

Ray White®

Ryan Amler

0401971622

ryan.amler@raywhite.com