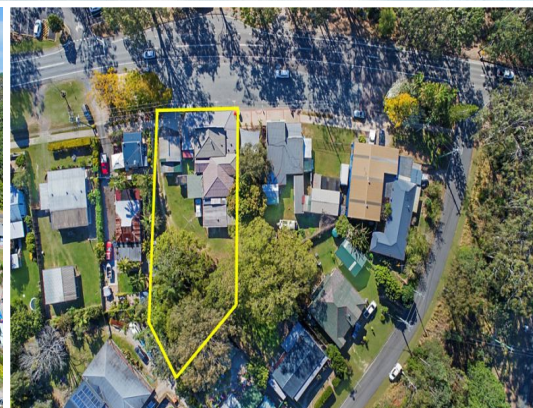


**LEASED**



**5 Beerburrum Road, Beerburrum QLD 4517**

## Cafe' With Residence Ideally Suited to Owner/Operator

A cafe ready to be brought back to life with live in accommodation and additional income from two other tenancies. Located on a busy arterial road between Brisbane and the Sunshine Coast and benefits from a slip road that provides ease of customer parking.

- Land Area: 1817m2\*
- High exposure site in growth region
- An opportunity to create a popular tourist destination
- Opposite a state school and a popular recreational park

For more information marketing contact agents:

Alan Gray 0414 894 084

Retail  
FOR LEASE

1817sqm

# Ray White®

**Len Greedy**

0401691807

len.greedy@raywhite.com

**Alan Gray**

0414894084

alan.gray@raywhite.com