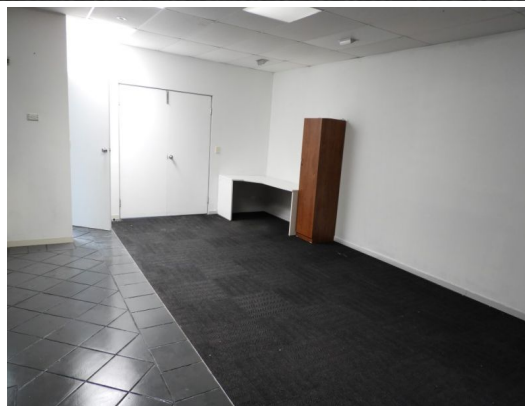


**SHORE**



, Warriewood NSW 2102

## OUTSTANDING OFFICE SPACE IN GREAT LOCATION

Positioned in prominent corner location in cul-de-sac off Mona Vale Road via Ponderosa Parade & Apollo Street in Warriewood's industrial precinct with easy access to major arterial roads and only a short drive to Mona Vale's CBD.

Fully cabled open plan office with private partitioned office. Good size kitchenette & own W/C.

Offices  
FOR LEASE  
Contact Agent  
65sqm

**SHORE**

**Leigh Hyland**

leigh@shorecp.com.au