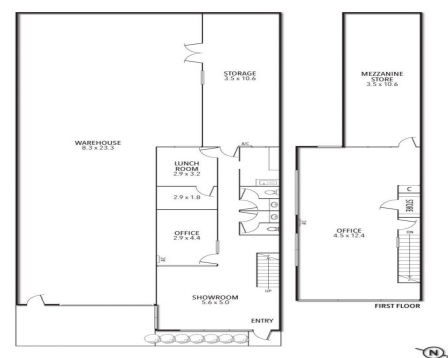


17/5 SAMANTHA COURT, KNOXFIELD



17/5 Samantha Court, Knoxfield VIC 3180

Opportunity Knox

This well located premises offers both a rare half office/half warehouse set up. Situated in a highly sought after and tight estate with access to major arterial roads this is an affordable offering not to be overlooked.

- Building area | 275m² approximately
- Office & mezzanine
- 3 onsite car parks
- Zoning | Industrial 1

Industrial
FOR LEASE

275sqm

Ray White®

Kristian Etherington

0400 409 833

kristian.etherington@raywhite.com