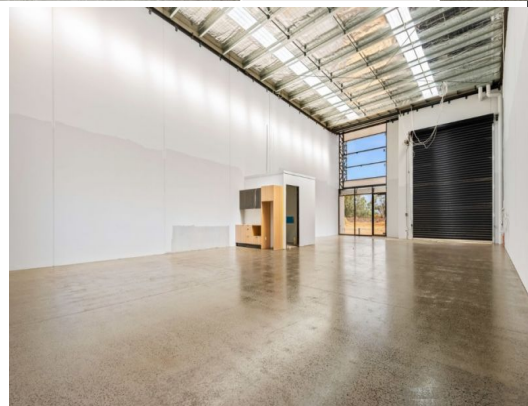
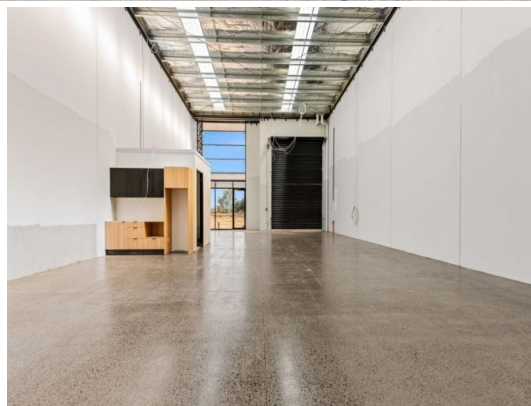




RayWhite



6/1626-1638 Centre Road, Springvale VIC 3171

Unit 6 | SPRINGVALE BUSINESS PARK

SOLD!

- Total building area | 174m²*
- Polished concrete floors & painted internal walls
- Matte black fixtures & fittings
- Full size kitchenette with high quality cabinetry including overhead
- Bathrooms with shower and floor to ceiling tiles
- Internal clearance up to 8.5 metres*
- Electric roller door, 3 phase power, LED High Bay Lights
- On-title car parking
- Industrial 1 Zone (IN1Z)

The intelligent design and impeccable finishes of Springvale Business Park raises the bar far beyond the standard

Industrial
FOR SALE

174sqm

Ray White

Theo Karkanis

0431391035

theo.karkanis@raywhite.com