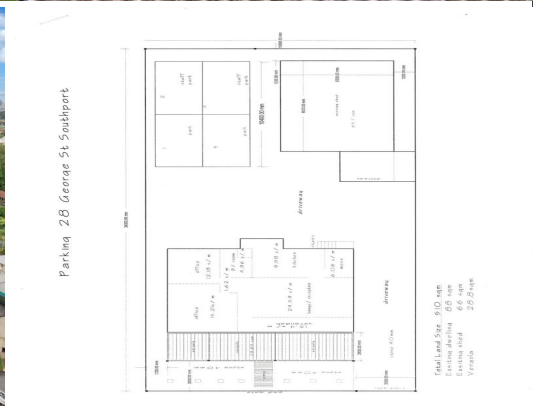




Outlines Indicative Only



28 George Street, Southport QLD 4215

Industrial Tenanted Investment on Brand New 5 Year Lease + Options

This rare inner city industrial freehold offers those who are wanting an investment opportunity with a secure, long term lease garnering a 6.4% return just minutes from the Southport CBD.

Key Features Include:

- + 516m² land parcel with a 88m²* home/office and a 66m²* rear workshop.
- + Exclusive on-site parking as well as drive through capacity from George to Maid Street
- + Value Add potential as it offers wonderful re-development possibilities.

Industrial
FOR SALE

88sqm

Kevin Wallace

0403 507 057

k.wallace@rwsp.net