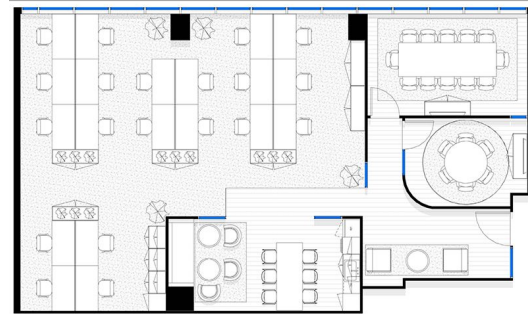


Suite 1503/25 Bligh Street, Sydney
Option 1



Suite 1503/25 Bligh Street, Sydney
Option 2

Suite 1503/25 Bligh Street, Sydney NSW 2000

Brand new fit out

25 Bligh Street is situated on the western side of Bligh Street between Hunter and Bent Streets in the heart of the financial precinct. On-site amenities available to tenants include a gymnasium, showers, storage facilities and forecourt coffee cart.

- Brand new fit out under construction due for completion May 2020
- Reception, meeting room, boardroom, 16 to 18 desks, kitchen

Offices
FOR LEASE
\$1,200 psm pa gross plus GST
180sqm

Ray White

Anthony Harris

aharris@raywhite.com

Marcus Plummer

mplummer@raywhite.com