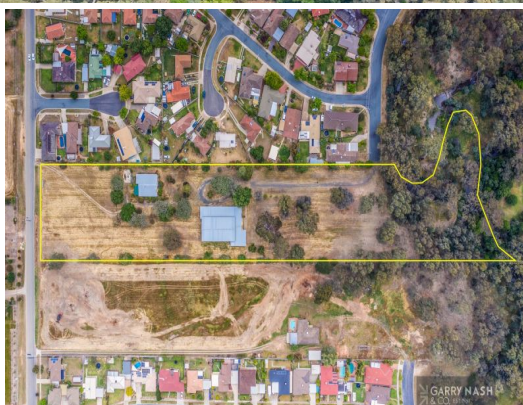




GARRY NASH & CO. EST. 1981



House & Land Package.

House and land package from \$360,500*

Address: 18 Commonant Way, Wangaratta

Inclusions:

- House & Land
- Heating & Cooling
- Floor Coverings Throughout
- Dishwasher & Cupboard
- Stainless Steel Appliances

More 170 - Expressions Open

Click on a call or drop in for a chat today!

Office:
Wangaratta
148 Doolittle St, Wangaratta VIC 3677
Call: 08 5464 9888
Email: sales@garrynash.com.au

Warranup
1000 Warranup Road
Call: 08 9494 9888
Email: sales@garrynash.com.au
Or visit garrynash.com.au

Call us today 8888
Email: sales@garrynash.com.au
Or visit garrynash.com.au

© 2019 Garry Nash & Co. All rights reserved.

Welcome home. **G.J. Gardner. HOMER**

9/21-25 Worland Road, Wangaratta VIC 3677

CLAIREVUE ESTATE - LOT 9

- * New land subdivision adjoining the 3 Mile Creek reserve
- * Lots ranging from 502m2 to 911m2
- * Fully serviced
- * Close proximity to various services including walking paths, bus stop & St. Johns
- * Construction has now commenced with an expected completion date of

Land
FOR SALE

November 2020



Cameron Meggs

0437 221 328

sales@garrynash.com.au