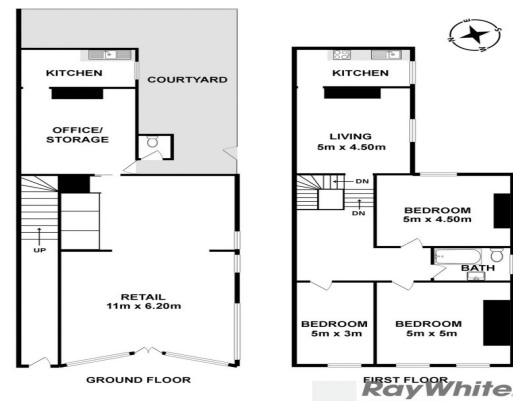
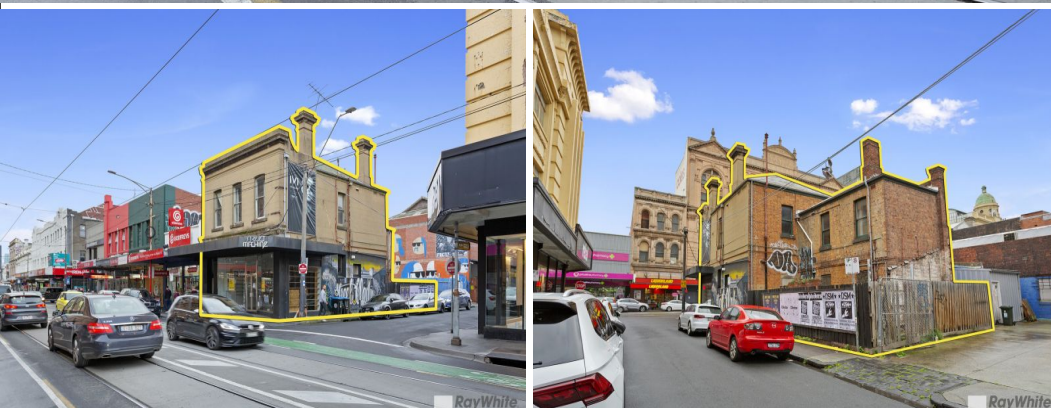




RayWhite
COMMERCIAL



302 Chapel Street, Prahran VIC 3181

Chapel Street Retail plus Office / Dwelling!

Ray White Commercial Oakleigh are pleased to offer for Lease this 2 storey corner building with exposure to one of Melbourne's most iconic street.

Chapel Street is well known as Melbourne's premier retail strip and entertainment precinct renowned for high end fashion, world class dining & boutique specialty shops.

This 2 storey freehold strategically located on the corner of Chapel Street and Walker street, surrounded by all the very best that Prahran has to offer.

The first floor offers a separate entrance consisting of 105sqm* office space & complemented with high ornate cei

Retail
FOR LEASE

210sqm

Ray White

George Kelepouris

0425798677

george.kelepouris@raywhite.com