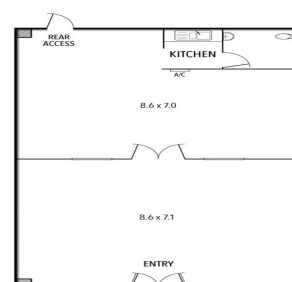




43 ANSLOW STREET, WOODEND



43 Anslow Street, Woodend VIC 3442

## Central Woodend Location

A versatile space in a Commercial 1 zone which will lend itself to a wide range of uses (STCA). Rectangular shaped with wide glass frontage and plenty of exposure onto Anslow Street. Area is split by a partial height stud wall with double doors into the rear storage/warehouse area. Rear doorway access and kitchenette and disabled bathroom facilities. Supported by surrounding tenancies including Target, Australia Post and Mitre 10 as part of the 19th Hole Shopping Centre.

- Flexible leasing terms
- Building area | 121m<sup>2</sup> approximately
- Zoning | Commercial 1

Retail  
FOR LEASE

121sqm

# Ray White®

**Cameron Barber**

0431 176 786

cameron.barber@raywhite.com