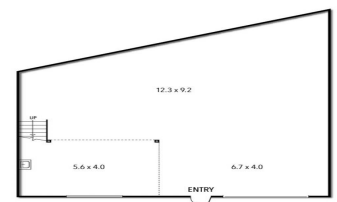
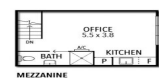


59/65-67 CANTERBURY ROAD, MONTROSE



59/65-67 Canterbury Road, Montrose VIC 3765

Entry Level Renovated Warehouse

Ray White Commercial is proud to present this unique opportunity to purchase this recently renovated factory within this renowned industrial estate on Canterbury Road.

The property comprises the following features:

- Building area | 159m² approximately
- Mezzanine office | 21m² approximately
- Factory floor area | 138m² approximately
- Level 1 shower and bathroom
- 2 car spaces
- 4.8m high clearance factory
- Ease of access being at the back of the complex
- Current tenant on monthly lease

Industrial
FOR SALE

159sqm

Ray White®

Brett Diston

0439365532

brett.diston@raywhite.com