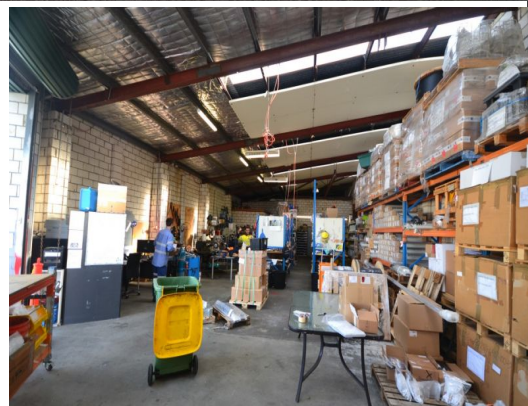




Outline indicative only



3/93 Leach Highway, Kewdale WA 6105

Stand out location! Direct exposure to Leach Highway

Ray White Commercial (WA) are pleased to offer for lease Unit 3,93 Leach Highway, Kewdale.

This unit benefits from outstanding exposure to passing traffic along Leach Highway.

The building comprises :

- 79sqm* office/showroom
- 179sqm* warehouse
- rear roller door access
- separate kitchen, 2 toilets and shower facilities

Industrial
FOR LEASE

258sqm

Ray White.

Chris Matthews

0413 359 315

chris.matthews@raywhite.com

Angus McMillan

0439 555 439

angus.mcmillan@raywhite.com